

EXPORT CONTROL STATEMENT:
 PUBLIC DISCLOSURE OF ANY INFORMATION TO FOREIGN PERSON, WHETHER IN THE UNITED STATES OR ABROAD, MARKED AS INDICATED ABOVE MAY BE PROHIBITED BY THE TRADE SECRETS ACT (18 U.S.C. SEC 1905), THE ECONOMIC ESPIONAGE ACT OF 1996 (18 U.S.C. 1831 ET SEQ.), AND INTERNATIONAL TRAFFIC IN ARMS REGULATIONS (ITAR). THIS DOCUMENT IS NOT TO BE MADE AVAILABLE WITHOUT PRIOR EXPRESS WRITTEN PERMISSION OF PIC WIRE & CABLE.

REVISION HISTORY

REV	DESCRIPTION	DATE	APPROVED
0	INITIAL RELEASE	08/01/22	J.SUGAR
1	CHANGED TITLE BLOCK TO MATCH CUSTOMER MANUAL	10/07/22	J.SCHAEFER

NOTES

- ALL ASSEMBLY WORK TO BE PERFORMED ACCORDING TO ANG-MFG-WI-00056 UNLESS OTHERWISE NOTED.
- SOLDERING TO BE PERFORMED ACCORDING TO IPC-J-STD-001, AS APPLICABLE.
- WORKMANSHIP TO BE PERFORMED ACCORDING TO IPC-A-620. CLASS 2
- INCLUDE APPROPRIATE TEST DOCUMENTATION WITH EACH SHIPMENT.
- TO ORDER, SPECIFY PART NUMBER. "A", "B", "C", AND "DDDD" IN 11012-4890-ABCD DDD ARE AS FOLLOWS:
 "A" VALUE DETERMINES ASSEMBLY APPLICATION.
 "B" VALUE DETERMINES CABLE PART NUMBER.
 "C" VALUE DETERMINES CONNECTOR CONFIGURATION.
 "DDDD" VALUE DETERMINES ASSEMBLY LENGTH IN INCHES.
 SEE SHEET 3 FOR SPECIFIC INFORMATION.
- LABELS ARE PER MIL-DTL-23053/5 - 1XX-9 (CLASS ONE - WHITE)
 COVER LABELS WITH CLEAR HEAT SHRINK PER MIL-DTL-23053/5-2XX-C (CLASS 2 - CLEAR).
 LENGTH AND SIZE OF LABELS & CLEAR SHRINK AS REQUIRED.

UNLESS OTHERWISE SPECIFIED:

- FOR ASSEMBLIES 12 INCHES OR SHORTER, APPLY ONE LABEL LOCATED AT END A.
- FOR ASSEMBLIES LONGER THAN 12 INCHES, APPLY ONE LABEL TO EACH END.
- FOR ASSEMBLIES WITH AN UNTERMINATED END, APPLY ONE LABEL TO TERMINATED END ONLY (REGARDLESS OF LENGTH).

7 LABEL TEXT ON LINE ONE TO BE ASSEMBLY PART NUMBER. FOR LINE TWO TEXT, REFER TO "CABLE LABELING/COLOR CODING INFORMATION" TABLE ON SHEET 3. XXXXX ON LABEL = PIC WIRE AND CABLE SERIAL NUMBER

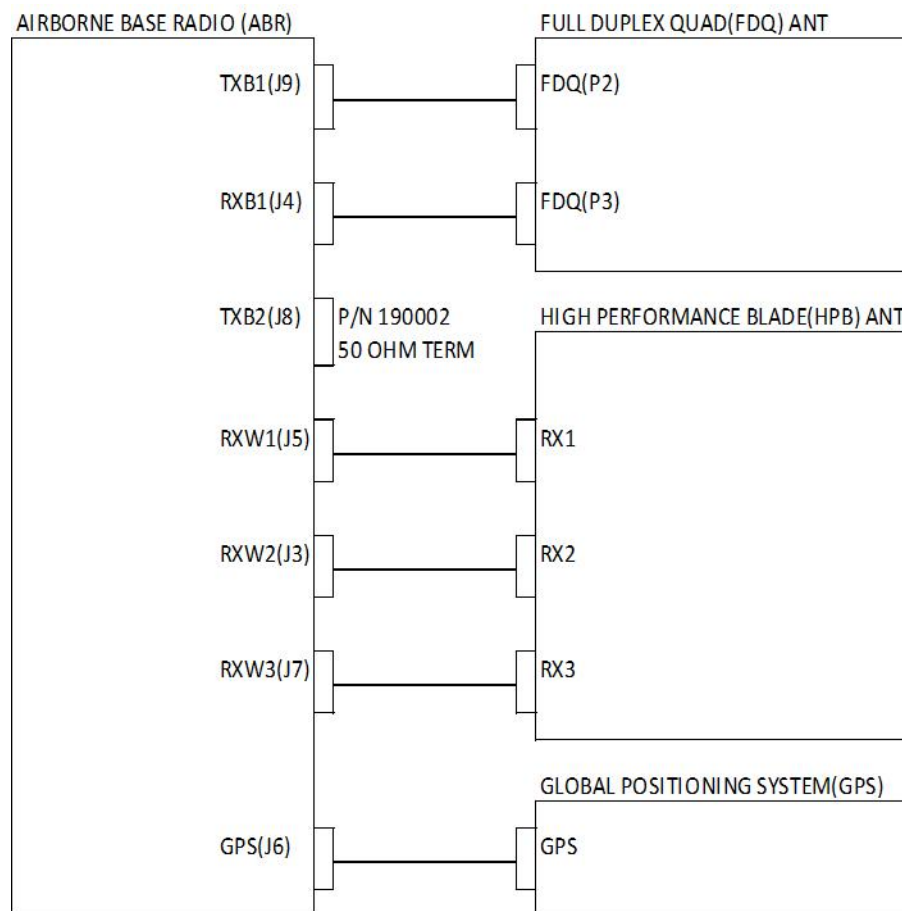
8. APPLY COLOR BANDS OVER CABLE AT EACH END, AS CLOSE TO CONNECTOR ATUM HEAT SHRINK AS POSSIBLE. COLORS ARE DETERMINED BY "A" VALUE AND CAN BE FOUND IN "CABLE LABELING/COLOR CODING INFORMATION" TABLE ON SHEET 3. APPLY END A & B LABEL NEXT TO COLOR BAND HEAT SHRINK.

9. TEST REQUIREMENTS:

- FOR "A" VALUE = 1, ABR TO FDQ(Tx):
 TEST FROM 2.4 TO 2.6 GHz
 LOSS: 3.0 dB MAX @ 2.483 GHz
- FOR "A" VALUE = 2, ABR TO FDQ(Rx):
 TEST FROM 2.4 TO 2.6 GHz
 LOSS: 4.0 dB MAX @ 2.483 GHz
- FOR "A" VALUES OF 3 THROUGH 5, ABR TO HPB(Rx):
 TEST FROM 2.4 TO 2.6 GHz
 LOSS: 6.0 dB MAX @ 2.483 GHz
- FOR "A" VALUE = 6, ABR TO AGA
 TEST FROM 1.5 TO 1.7 GHz
 LOSS: 4.0 dB MAX @ 1.6 GHz

VSWR FOR ALL ASSEMBLIES IS 1.5:1 MAX

10 TNC 50 OHM TERMINATION AVAILABLE FOR TXB2 (J8). TO ORDER, SPECIFY P/N 190002.



A/R	B2-1/4 YELLOW	SUMITOMO SHRINK TUBE YELLOW	48
A/R	B2-3/16 YELLOW	SUMITOMO SHRINK TUBE YELLOW	47
A/R	B2-3/8 YELLOW	SUMITOMO SHRINK TUBE YELLOW	46
A/R	B2-1/2 YELLOW	SUMITOMO SHRINK TUBE YELLOW	45
A/R	B2-3/4 YELLOW	SUMITOMO SHRINK TUBE YELLOW	44
A/R	B2-1/4 BLUE	SUMITOMO SHRINK TUBE BLUE	43
A/R	B2-3/16 BLUE	SUMITOMO SHRINK TUBE BLUE	42
A/R	B2-3/8 BLUE	SUMITOMO SHRINK TUBE BLUE	41
A/R	B2-1/2 BLUE	SUMITOMO SHRINK TUBE BLUE	40
A/R	B2-3/4 BLUE	SUMITOMO SHRINK TUBE BLUE	39
A/R	B2-1/4 RED	SUMITOMO SHRINK TUBE RED	38
A/R	B2-3/16 RED	SUMITOMO SHRINK TUBE RED	37
A/R	B2-3/8 RED	SUMITOMO SHRINK TUBE RED	36
A/R	B2-1/2 RED	SUMITOMO SHRINK TUBE RED	35
A/R	B2-3/4 RED	SUMITOMO SHRINK TUBE RED	34
A/R	RNF-1/4-CL-SP	TE SHRINK TUBE CLEAR	33
A/R	RNF-3/16-CL-SP	TE SHRINK TUBE CLEAR	32
A/R	RNF-3/8-CL-SP	TE SHRINK TUBE CLEAR	31
A/R	RNF-1/2-CL-SP	TE SHRINK TUBE CLEAR	30
A/R	RNF-3/4-CL-SP	TE SHRINK TUBE CLEAR	29
A/R	TTMS-MP-4.8-9	TE LABEL SHRINK TUBE- WHITE	28
A/R	TTMS-MP-9.5-9	TE LABEL SHRINK TUBE- WHITE	27
A/R	TTMS-MP-12.7-9	TE LABEL SHRINK TUBE- WHITE	26
A/R	150409	TNC 90 PLUG	25
A/R	150408	TNC STRAIGHT PLUG	24
A/R	150509	TNC 90 PLUG	23
A/R	150508	TNC STRAIGHT PLUG	22
A/R	150109	TNC 90 PLUG	21
A/R	150108	TNC STRAIGHT PLUG	20
A/R	190409	TNC 90 PLUG	19
A/R	190408	TNC STRAIGHT PLUG	18
A/R	190609	TNC 90 PLUG	17
A/R	190608	TNC STRAIGHT PLUG	16
A/R	190309	TNC 90 PLUG	15
A/R	190308	TNC STRAIGHT PLUG	14
A/R	190109	TNC 90 PLUG	13
A/R	190108	TNC STRAIGHT PLUG	12
A/R	190809	TNC 90 PLUG	11
A/R	190808	TNC STRAIGHT PLUG	10
A/R	UH25107	ULTRA LIGHT 50 OHM COAX	9
A/R	UH22089	ULTRA LIGHT 50 OHM COAX	8
A/R	UH67163	ULTRA LIGHT 50 OHM COAX	7
A/R	UH44193	ULTRA LIGHT 50 OHM COAX	6
A/R	S22089	COAXIAL LOW LOSS CABLE	5
A/R	S55122	COAXIAL LOW LOSS CABLE	4
A/R	S33141	COAXIAL LOW LOSS CABLE	3
A/R	S44191	COAXIAL LOW LOSS CABLE	2
A/R	S86208	COAXIAL LOW LOSS CABLE	1
QTY	PART NO.	DESCRIPTION	ITEM

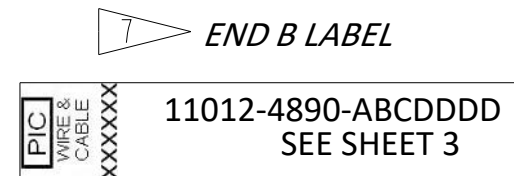
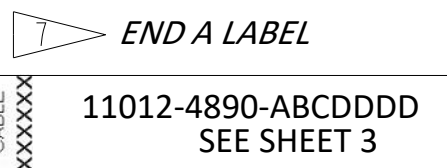
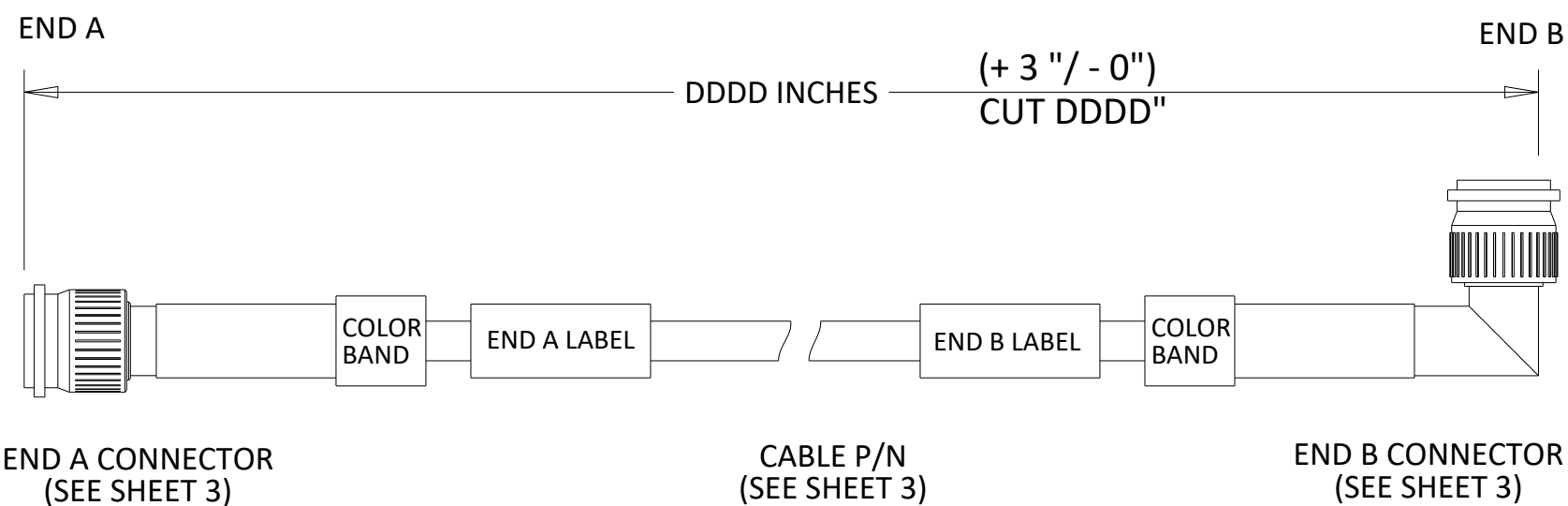
TOLERANCES: .X.....±0.1 .XX.....±0.01 .XXX.....±0.005 ANGLES.....±0.5°		UNLESS OTHERWISE SPECIFIED, DRAWING UNITS ARE IN INCHES	
ORIGINAL SIGNATURES ON FILE ISSUED J.SCHAEFER DATE 10/07/22 CHECKED F. BISHARA DATE 10/07/22 APPROVED J.SUGAR DATE 10/07/22		PIC A Division of The Angelus Corporation WIRE & CABLE WWW.PICWIRE.COM	
UNLESS OTHERWISE SPECIFIED, DRAWING IS IN THIRD ANGLE PROJECTION (US STANDARD)		TITLE SMARTSKY FLAGSHIP AIR-TO-GROUND SYSTEM RF COAXIAL CABLES	
PROPRIETARY NOTICE: THIS DOCUMENT AND THE INFORMATION CONTAINED WITHIN ARE PROPRIETARY DATA OF PIC WIRE & CABLE. NEITHER THIS DOCUMENT NOR THE INFORMATION CONTAINED WITHIN SHALL BE USED, REPRODUCED, OR DISCLOSED WITHOUT WRITTEN AUTHORIZATION OF PIC WIRE & CABLE.		DWG NO 11012-4890	REV 1
		INTERPRET DRAWING: PER ASME Y14.100-2004 DIM AND TOL PER ASME Y14.5-2009	CAGE OBCW9 SHEET 1 OF 3

1 2 3 4 5 6 7 8

A

A

PIC P/N 11012-4890-ABCDDDD
REFERENCE ONLY - ("C" VALUE = 1 ASSY SHOWN)
(SEE SHEET 3)



B

B

C

C

D

D

1 2 3 4 5 6 7 8

DWG NO	REV
11012-4890	1
INTERPRET DRAWING: PER ASME Y14.100-2004 DIM AND TOL PER ASME Y14.5-2009	CAGE 0BCW9
	SHEET 2 OF 3

SMARTSKY FLAGSHIP AIR-TO-GROUND SYSTEM DRAWING PLAN

Cable Assembly Part Numbers 11012-4890-ABCDDDD
(See Tables 1 thru 4 below)

Table 1

"A" Value - Assembly Application/Cable Labeling/Color Coding Information			
"A" Value	End A (From) Label	End B (To) Label	Color Band
1	ABR P9	FDQ P2-BLUE	Blue
2	ABR P4	FDQ P3-YELLOW	Yellow
3	ABR P5	HPB-BLU	Blue
4	ABR P3	HPB-RED	Red
5	ABR P7	HPB-YEL	Yellow
6	ABR P6	AGA	

Table 4

"DDDD" Value - Assembly Length	
"DDDD" Value	Length (in)
0001	1"
...	...
1311	1311"

Table 2

"B" Value - Coaxial Cable P/N			Max Cable Length Per Application (Length in inches)				Connector Part Numbers (For Reference)		Cable Loss, dB/ft (For Reference)	
			ABR to FDQ Tx (2.483 GHz)	ABR to FDQ Rx (2.483 GHz)	ABR to HPB Rx (2.483 GHz)	ABR to AGA (1.6 GHz)	TNC Straight Plug	TNC 90 Plug	1.6 GHz	2.483 GHz
"B" Value	Cable Part Number	TTMS and Color Band	Loss (3.0 dB MAX)	Loss (4.0 dB MAX)	Loss (6.0 dB MAX)	Loss (4.0 dB MAX)				
1	UH25107	12.7 Label - 3/4" Clear - 3/4" Color	609	843	1311	1096	190408	190409	0.040	0.051
2	UH22089	12.7 Label - 1/2" Clear - 1/2" Color	506	700	1089	893	150408	150409	0.049	0.062
3	UH67163	9.5 Label - 3/8" Clear - 3/8" Color	285	395	614	503	150508	150509	0.087	0.109
4	UH44193	4.8 Label - 1/4" Clear - 1/4" Color	168	232	361	296	150108	150109	0.148	0.186
5	S22089	12.7 Label - 3/4" Clear - 3/4" Color	502	695	1082	890	190408	190409	0.049	0.062
6	S55122	9.5 Label - 1/2" Clear - 1/2" Color	345	478	743	610	190608	190609	0.072	0.090
7	S33141	9.5 Label - 3/8" Clear - 3/8" Color	263	365	568	464	190308	190309	0.094	0.118
8	S44191	9.5 Label - 3/8" Clear - 3/8" Color	147	203	316	261	190108	190109	0.167	0.212
9	S86208	4.8 Label - 3/16" Clear - 3/16" Color	126	175	273	222	190808	190809	0.197	0.246

Table 3

"C" Value - Connector Configurations			Connector Loss per Pair (For Reference)	
"C" Value	End A (ABR)	End B (FDQ, HPB, or AGA)	1.6 GHz	2.483 GHz
1	TNC Straight	TNC 90	0.164 dB	0.205 dB
2	TNC 90	TNC Straight	0.164 dB	0.205 dB
3	TNC 90	TNC 90	0.177 dB	0.221 dB
4	TNC Straight	TNC Straight	0.152 dB	0.189 dB